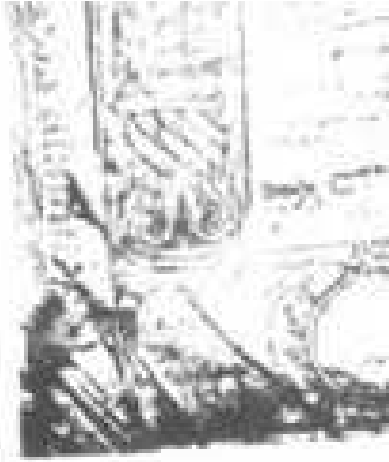
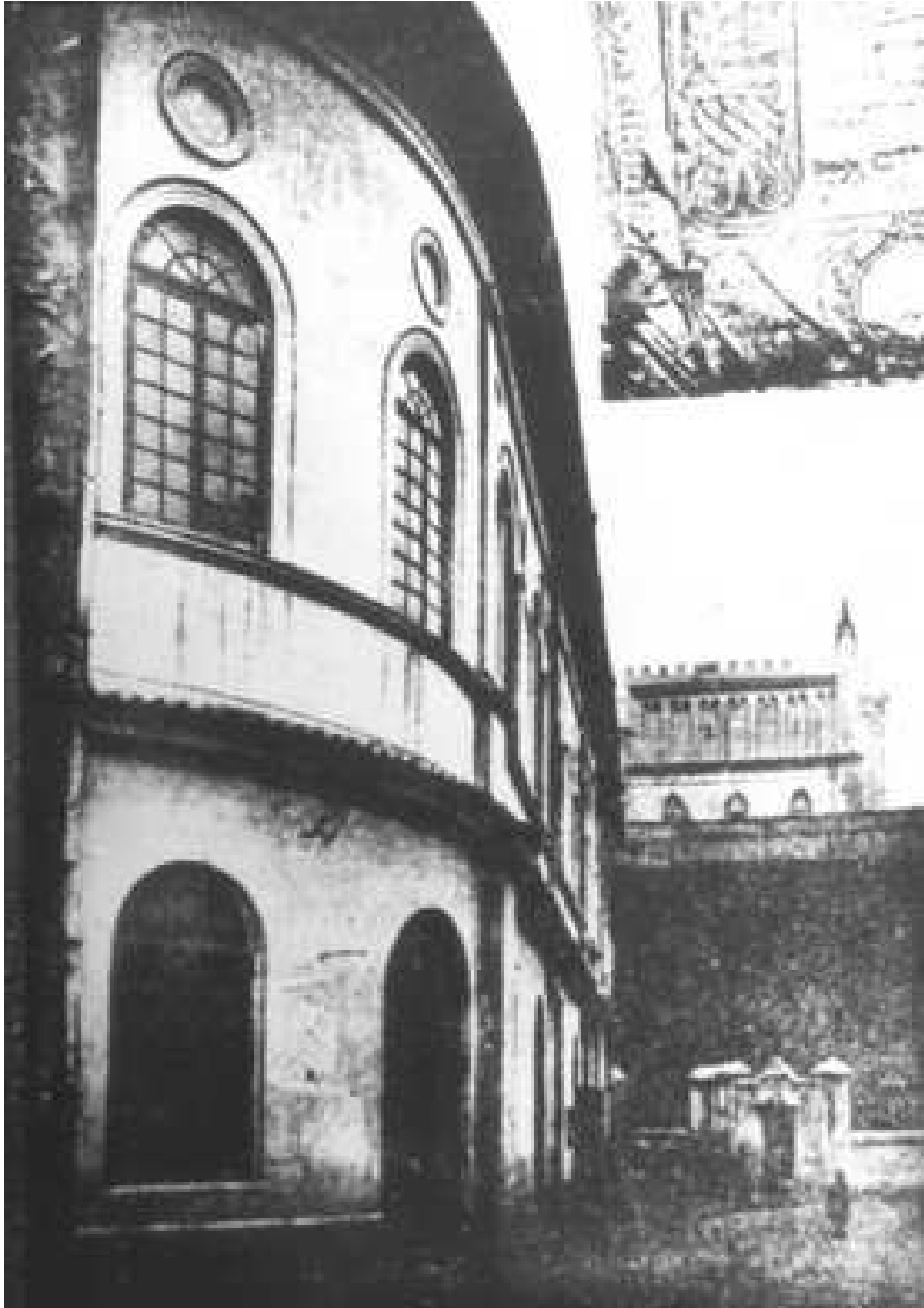
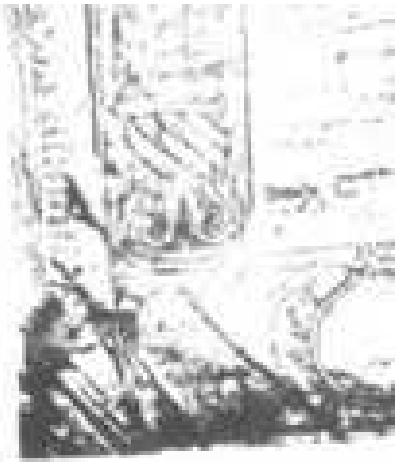
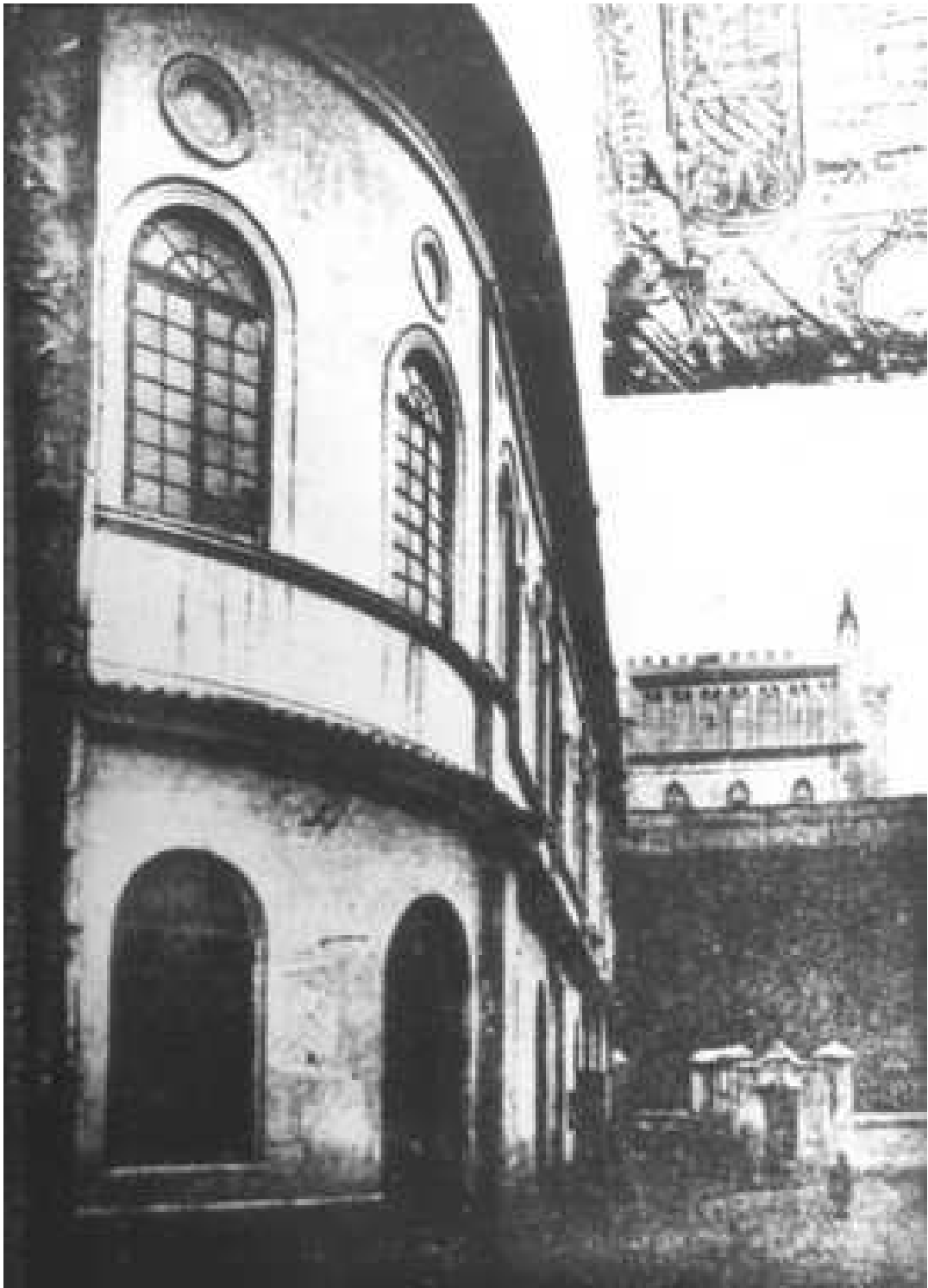


Find someone who...

Plays an instrument	Makes sports at least once a week	Listens to rock music
Has more than 2 brothers or sisters	Wants to study in the future	Has been to Szeroka 28 street in Lublin
Has a pet	Likes to read	Knows Iechak Jakub Horowitz

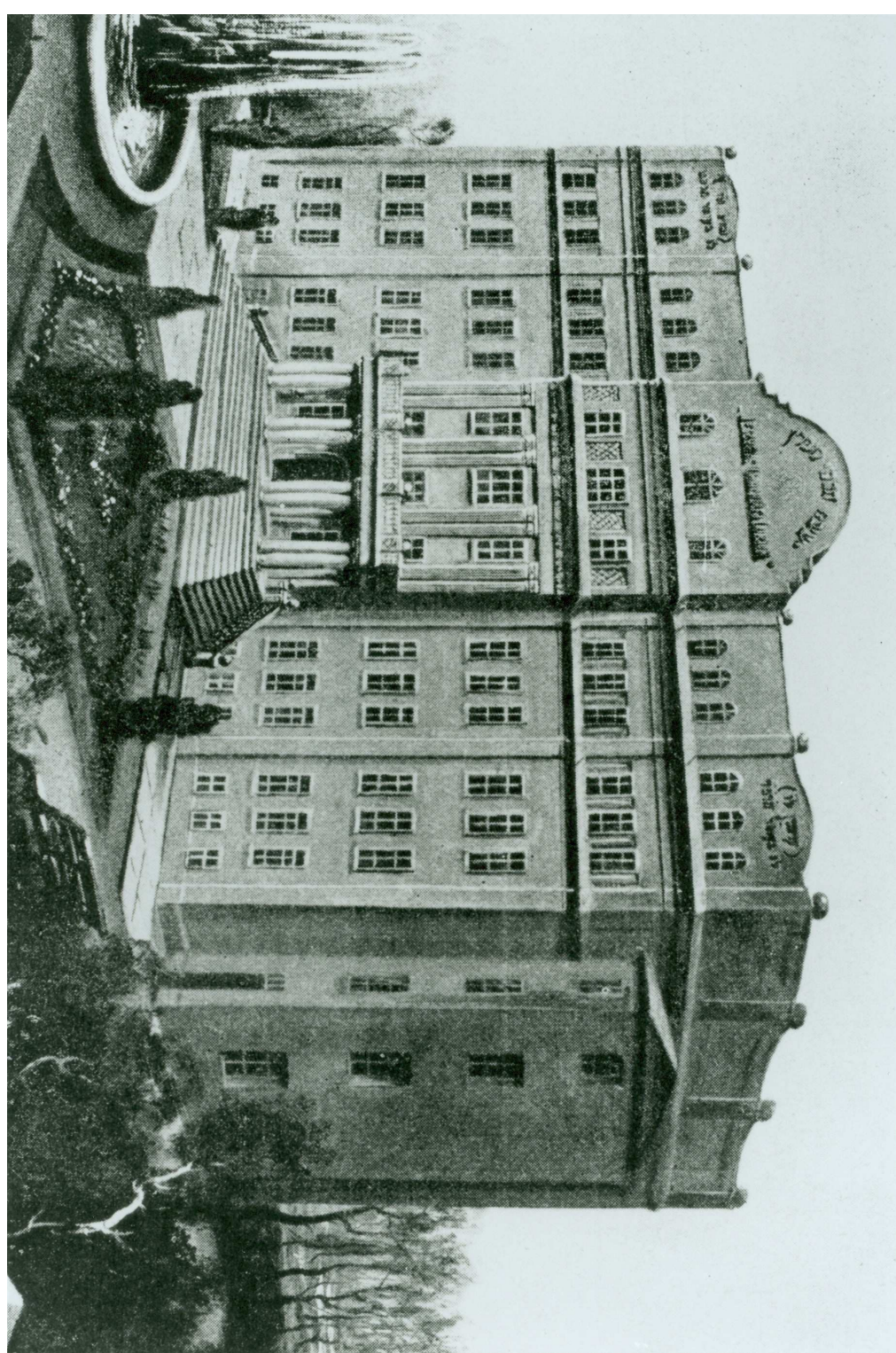
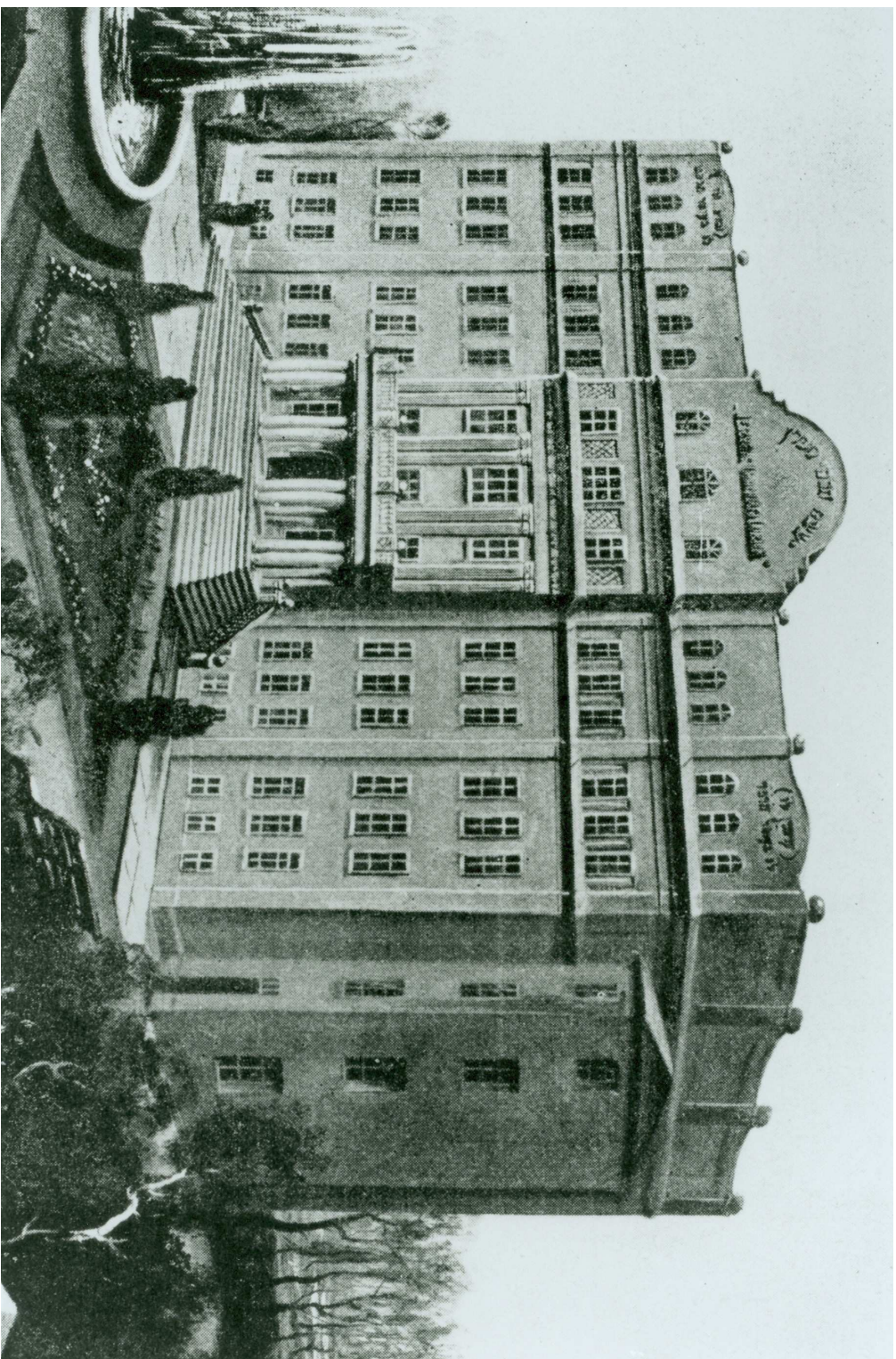
Find someone who...

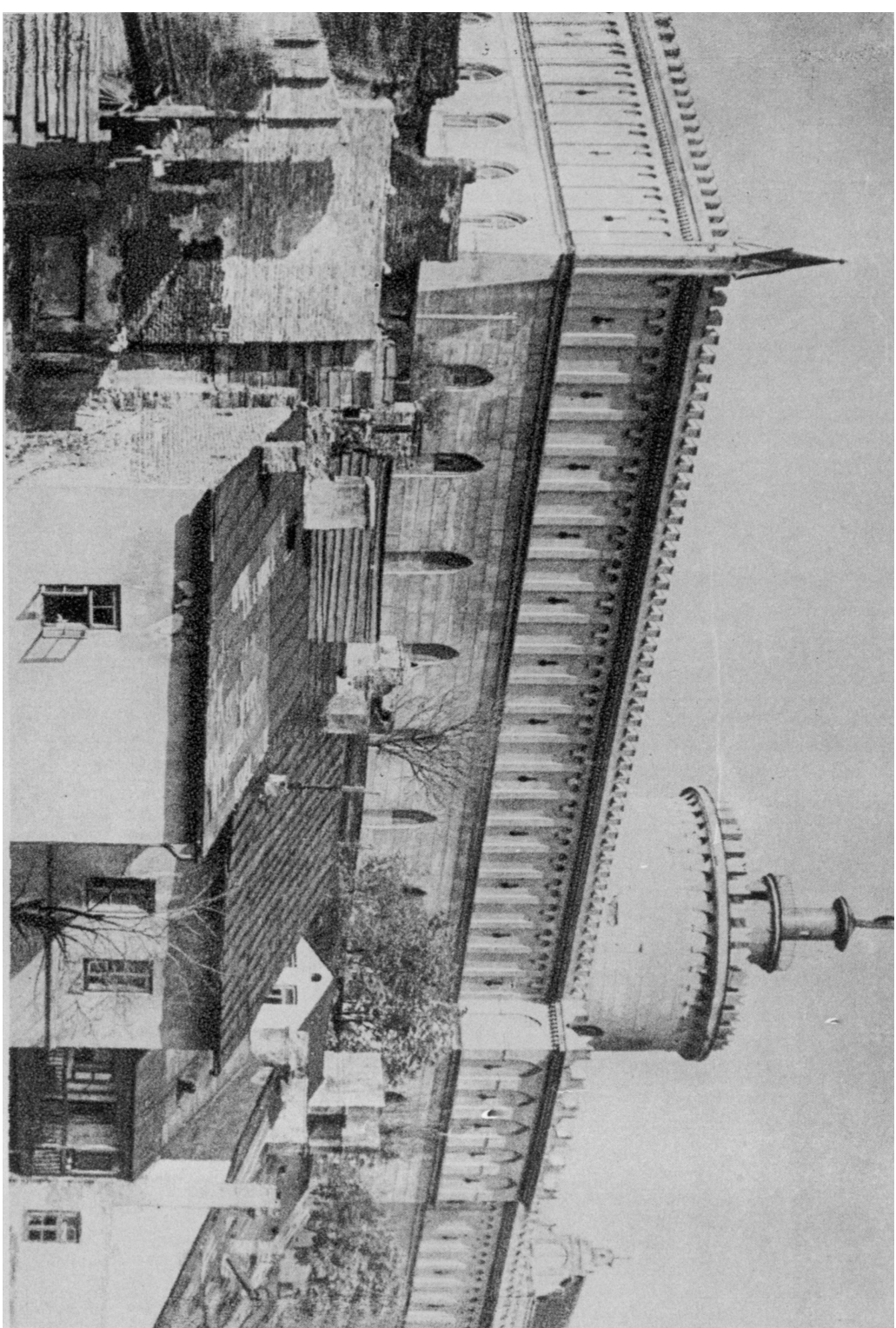
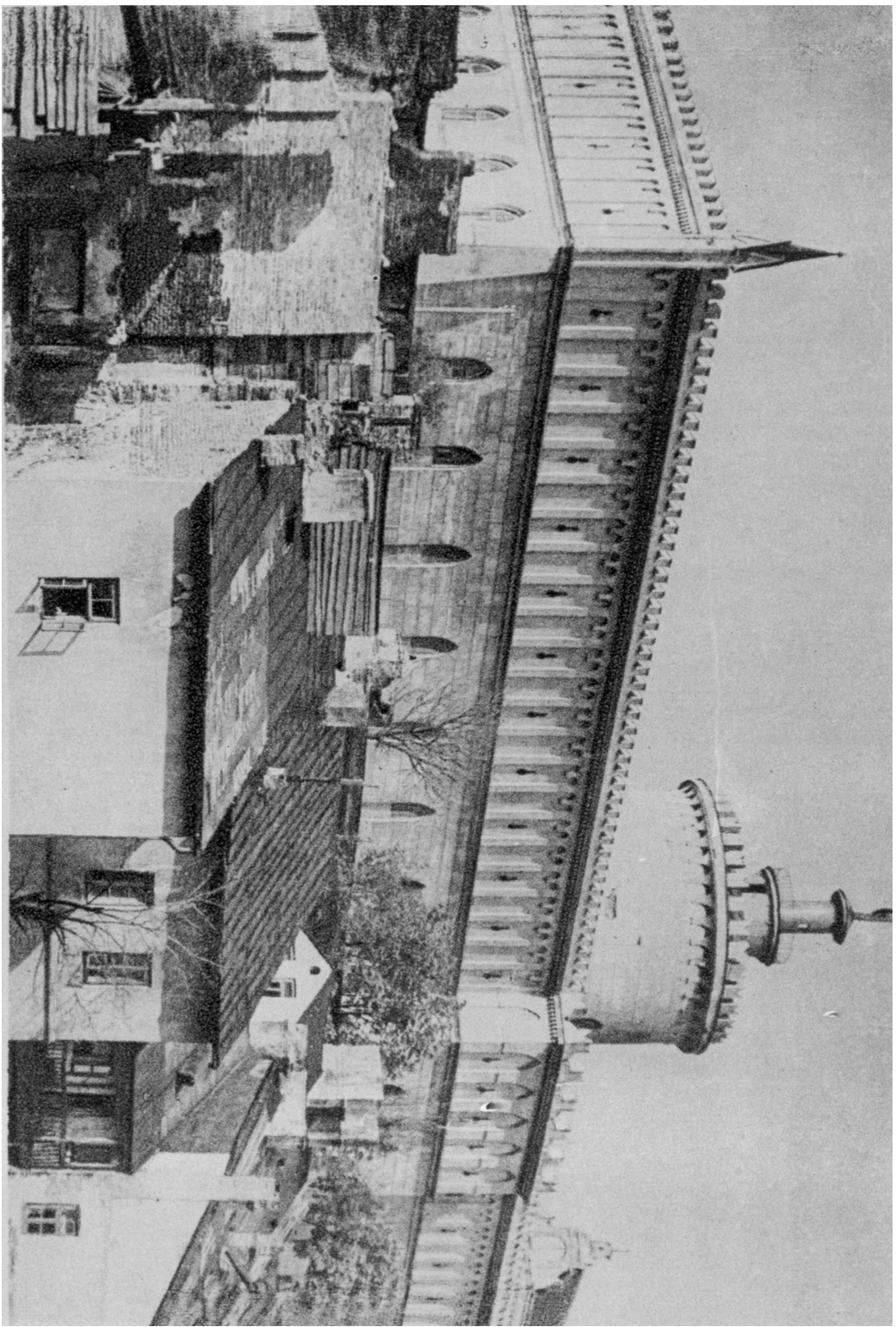
Plays an instrument	Makes sports at least once a week	Listens to rock music
Has more than 2 brothers or sisters	Wants to study in the future	Has been to Szeroka 28 street in Lublin
Has a pet	Likes to read	Knows Iechak Jakub Horowitz

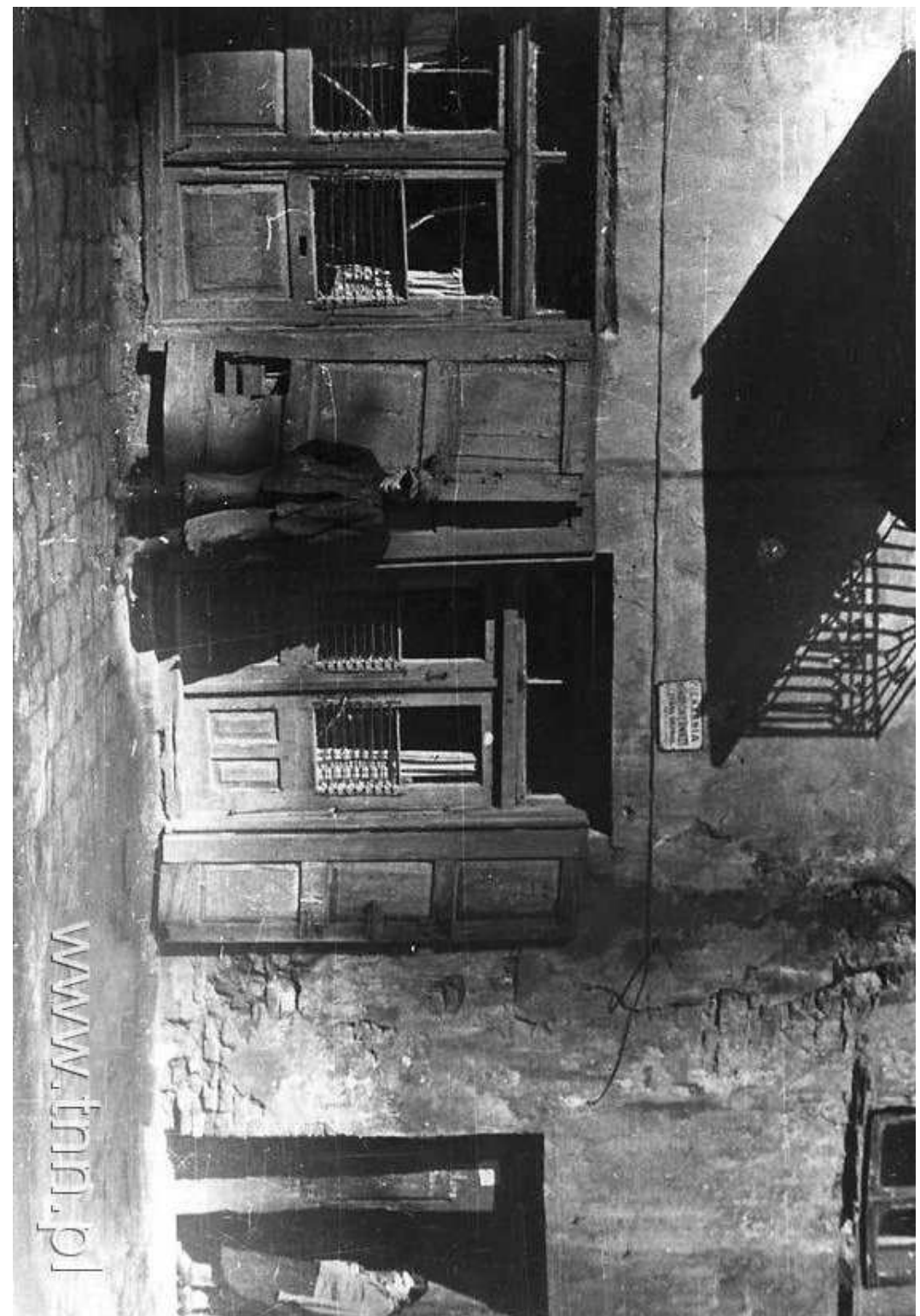
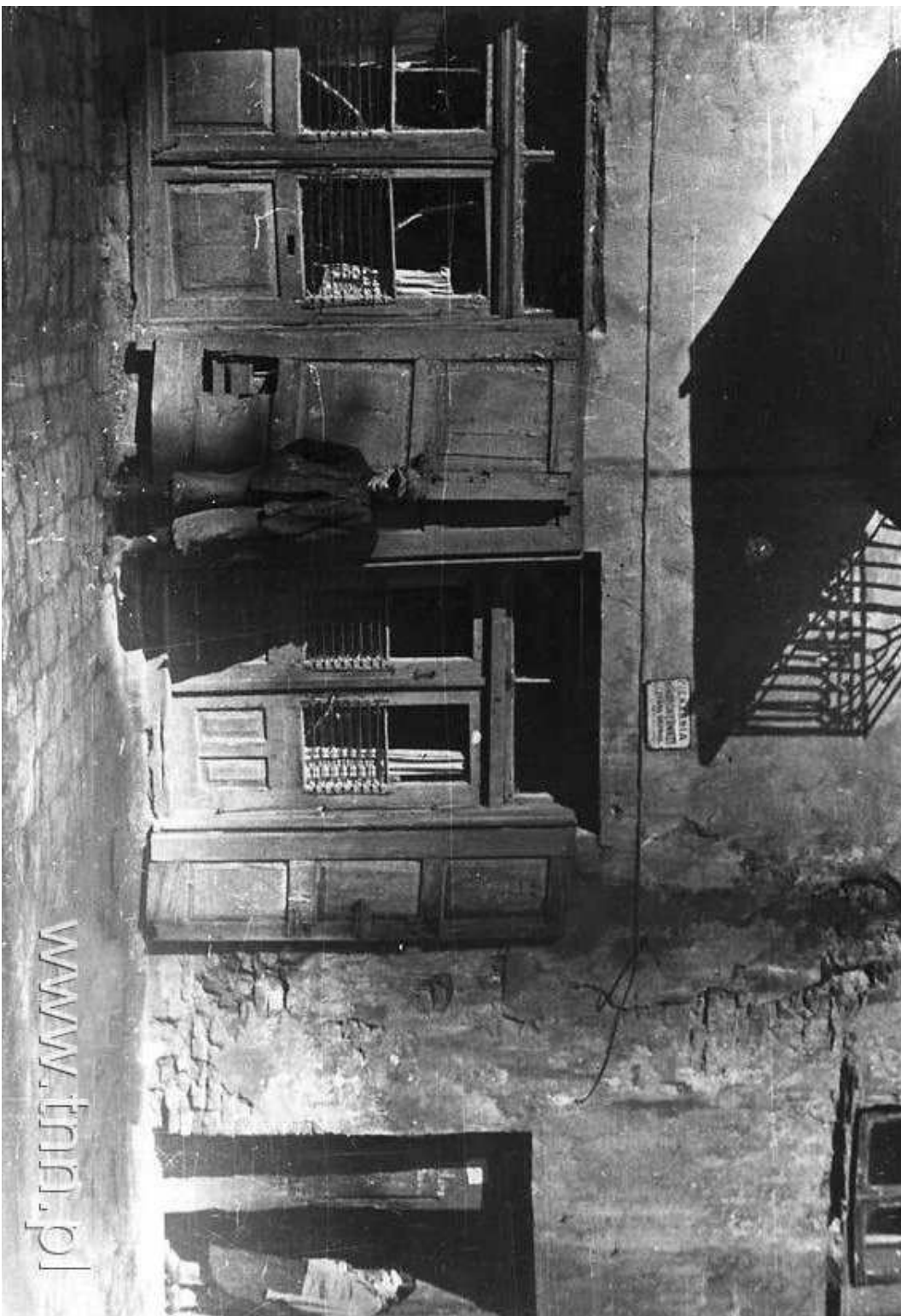




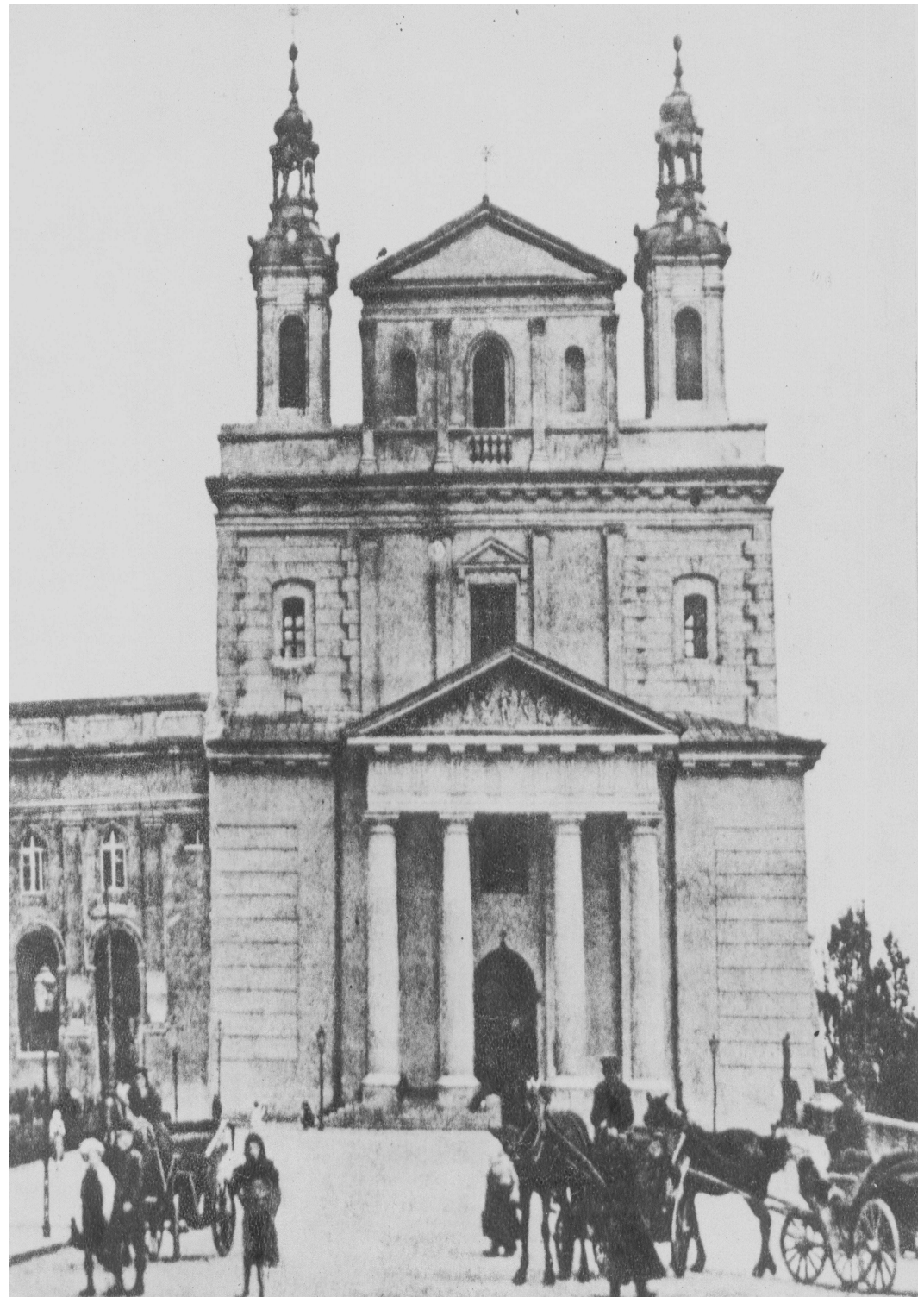










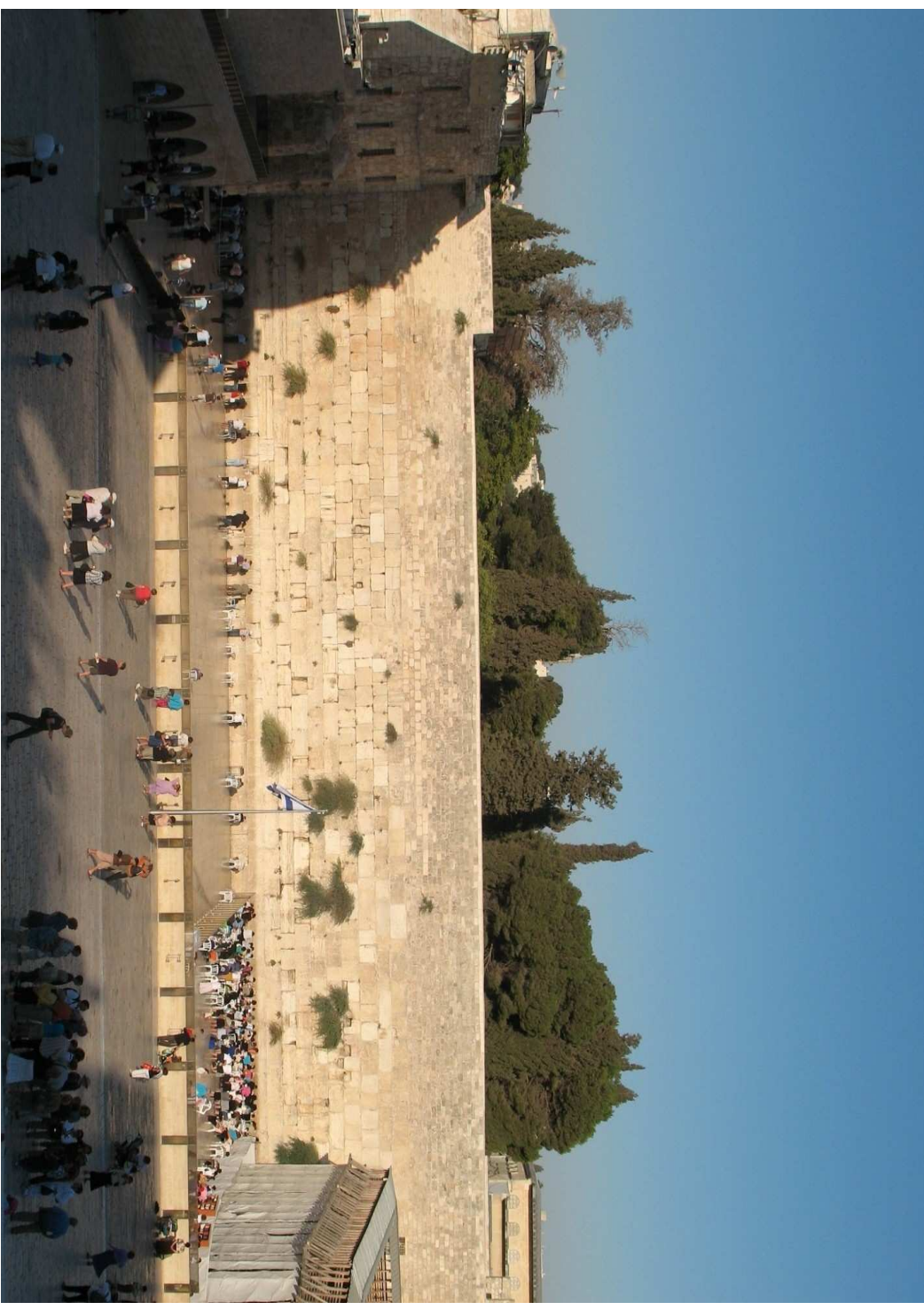












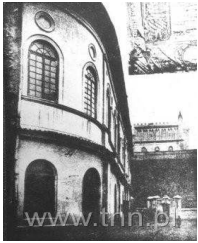








Water well at Szeroka (Broad) Str. (today central bus station). There used to be 7 such wells in Lublin. Today there is only one left.



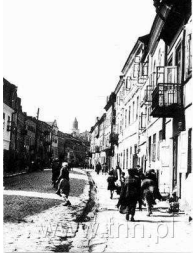
Maharszal and Maharam Synagogue (originally from XVII century). In two floors it could host up to 3000 people. The biggest synagogue in Lublin. It used to stand next to the castle, where today there is a big road (Aleje Tysiąclecia). Now there is a small commemorative tablet.



City Hall at Krakowskie Przedmieście Street.



Catholic cathedral in Lublin. Still there.



Szeroka (Broad) Street in Lublin – the main street in Jewish town in Lublin. Was going through the big castle square (that is in front of the castle nowadays), starting at Grodzka Gate, leading to where today there is the central bus station.



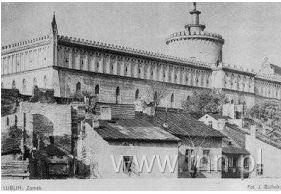
Grodzka Gate, called also Jewish Gate, as it was connecting both Polish (Christian) and Jewish towns. Seen from Jewish side at this picture.



Porta Sordida (Dung Gate) – Brama Zastrana under Zamkowa (Castel) St.,



David's Tower (Tower of David) in Jerusalem – an ancient citadel located near the Jaffa Gate entrance to the Old City of Jerusalem. Nowadays it hosts Museum of the History of Jerusalem. The name "Tower of David" is actually not accurate, as King David's original tower and fortifications were destroyed to the foundation several hundred years before this tower was reconstructed on them and rebuilt continuously. The tower itself was built by Ottomans in XVI century, as a minaret next to the mosque in the citadel.



Lublin Castle seen from the Jewish quarter.

Damascus Gate in Jerusalem. The modern gate was built in 1542 by the Ottoman ruler Suleiman the Magnificent, although the first gate was presumably built in Second Temple times. It is located at the edge of the Arab bazaar and marketplace.



Yeshivat Hachmej Lublin – Uczelnia Mędrców Lublina – Rabbinical High School – built in 1930's, one of the most important Jewish universities in Europe before the II World War. (Established by Mayer Shapiro). Still existing and belonging to the Jewish Community.



Szeroka (Broad) 28 Street. House where Ichak Jakub Horowic (Ha-Hoze - The Seer of Lublin), famous hassidic rabbi, died in this house in 1815.

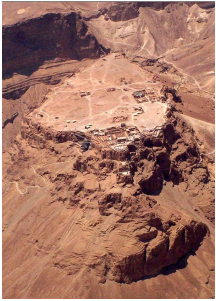


Western Wall (Ha Kotel) – Ściana Płaczu – Jewish religious site located in the Old City of Jerusalem. It is a part of the wall surrounding Temple Mount, where Jerusalem Temple was standing. Some parts of the Western Wall date from the end of the Second Temple period (constructed around 19 BCE by Herod the Great). This description Wailing Wall stemmed from the Jewish practice of coming to the site to mourn and bemoan the destruction of the Temple.





Aroma Café – popular meeting spot in Israel.



Masada – ancient palaces and fortifications built by Herod the Great around 37 BCE in the south Israel on top of an isolated rock plateau, on the edge of the Judean Desert overlooking the Dead Sea.



Jerusalem Chords Bridge



WWW.TM.P1

